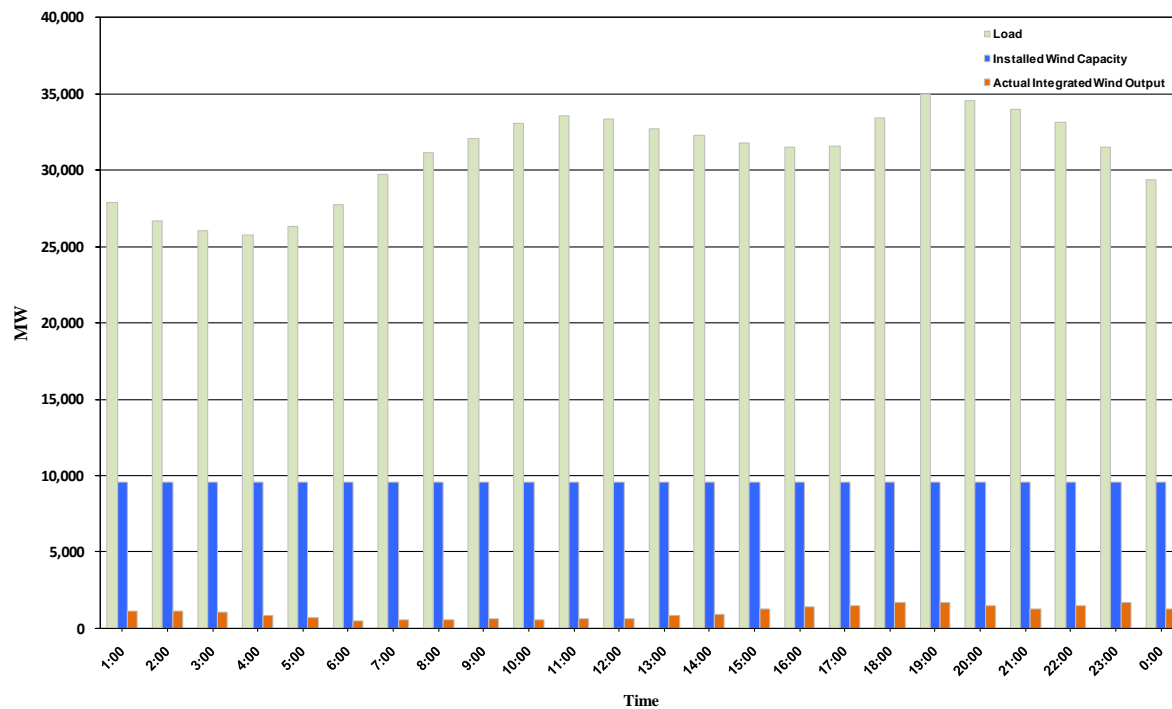




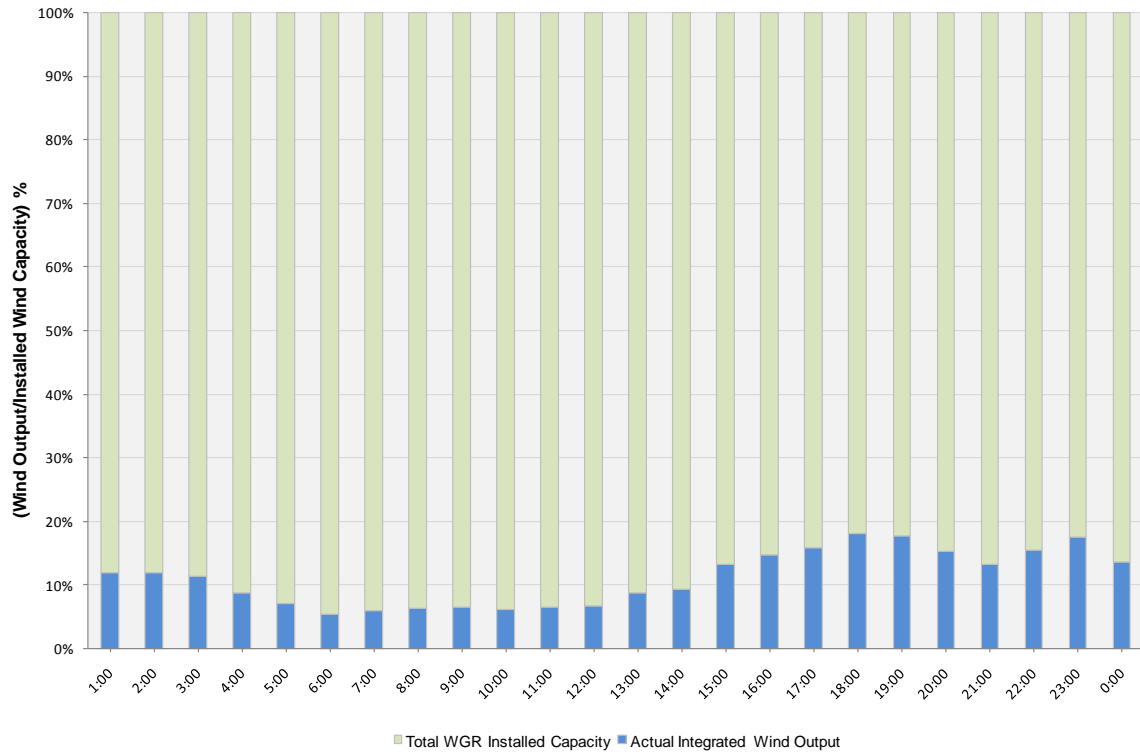
ERCOT Grid Operations Wind Integration Report: 12/23/10

Peak Load	35,001 MW
Load Peak Hour	19
Wind Record 12/11/10	7,227 MW
Max Wind Value	1,788 MW
Wind Peak Hour	18:02:00
Wind Integration %	5.1

Hourly Average Actual Load vs. Actual Wind Output
12-23-2010



Actual Wind Output as a Percentage of the Total Installed Wind Capacity
12-23-2010



Actual Wind Output as a Percentage of the ERCOT Load
12-23-2010

